

Regency Way
APARTMENT HOMES



Regency Way offers luxury you can afford

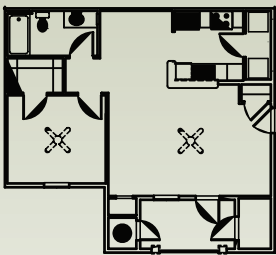
Sure, we all want to live in luxury, but these days who can afford the price tag? At *Regency Way Apartment Homes*, luxury becomes affordable. With our beautiful landscaped grounds, fabulous amenities, and first rate service, you may feel the need to pinch yourself to make sure you aren't dreaming. Please call or stop in today to take a personal tour of our magnificent apartments. It won't take long for you to decide to live a life of luxury the *Regency Way*.

Community Features

- Clubhouse
- Picnic Areas
- Playground
- Sand Volleyball Court
- Gated Access
- Onsite Business Center
- Swimming Pool

Apartment Features

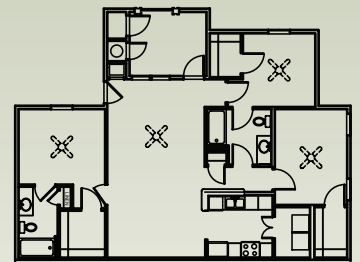
- Spacious Closets
- Washer and Dryer in every unit
- Cable and Internet Access
- Ceiling Fans
- Energy Efficient Appliances and Windows



1 Bedroom/1 Bath



2 Bedroom/ 2 Bath



3 Bedroom/2 Bath

Call Today! (228) 822-2293

Regency Way is located at:
1400 28th St.
Gulfport, MS 39501

Directions:
From I-10 take exit 38 (MS 605);
travel S. down MS 605; turn right at
East Pass Rd.; take slight right at 28th St.
Regency Way Apartments is located on the left.